

# Operation Manual

K77830

**! IMPORTANT:** THIS OPERATING MANUAL CONTAINS IMPORTANT SAFETY INFORMATION, READ CAREFULLY & UNDERSTAND ALL INFORMATION BEFORE OPERATING. SAVE THIS MANUAL FOR FUTURE USE



Do not open more than one drawer at a time.



Do not step on drawers.



Do not let children near the Toolbox.



Do not separate Chest from Trolley.



Do not exceed Drawer Load Limit



Not suitable for mounting in Vehicles



Set the brake on the locking castors unless your are moving the Toolbox.



Lock drawers and lid before moving the Toolbox.



## Specifications

Sliding Tray Load Capacity	100kg
Locker Load Capacity	900kg
Net Weight	133kg
Material	Heavy Gauge Steel
Measurements	L 700 x W 625 x H 1885mm

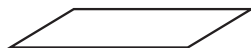
## Parts List



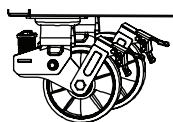
22 X BOLTS FOR CASTORS, MOUNTING PLATE & JOINING TO TROLLEY/HUTCH



2 X KEYS



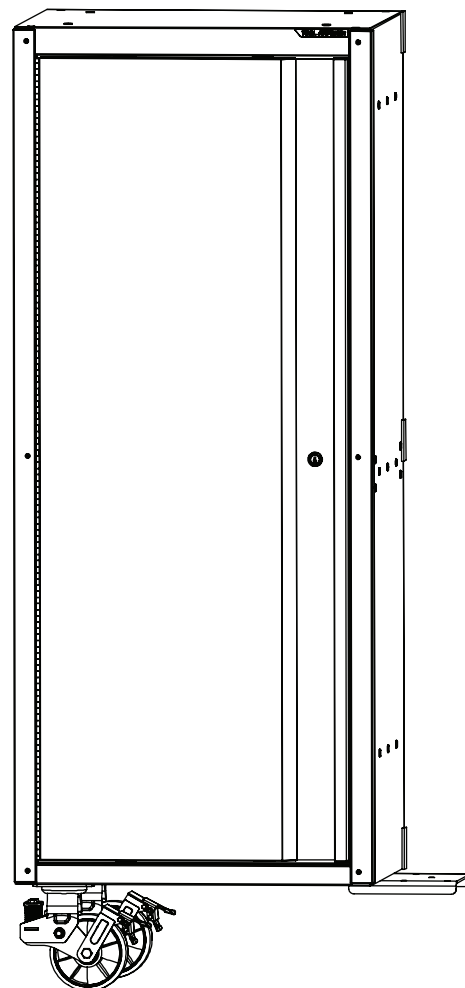
4 X EVA LINERS



2 X LOCKABLE SUSPENSION SWIVEL CASTORS



1 X SUPPORT BASE PLATE



## Maintenance

- > Periodically tighten all hardware
- > Periodically lubricate castors
- > Lubricate the slides twice a year
- > Lubricate the lock with graphite annually
- > Use a damp Microfibre cloth to clean all surfaces

# Operation Manual

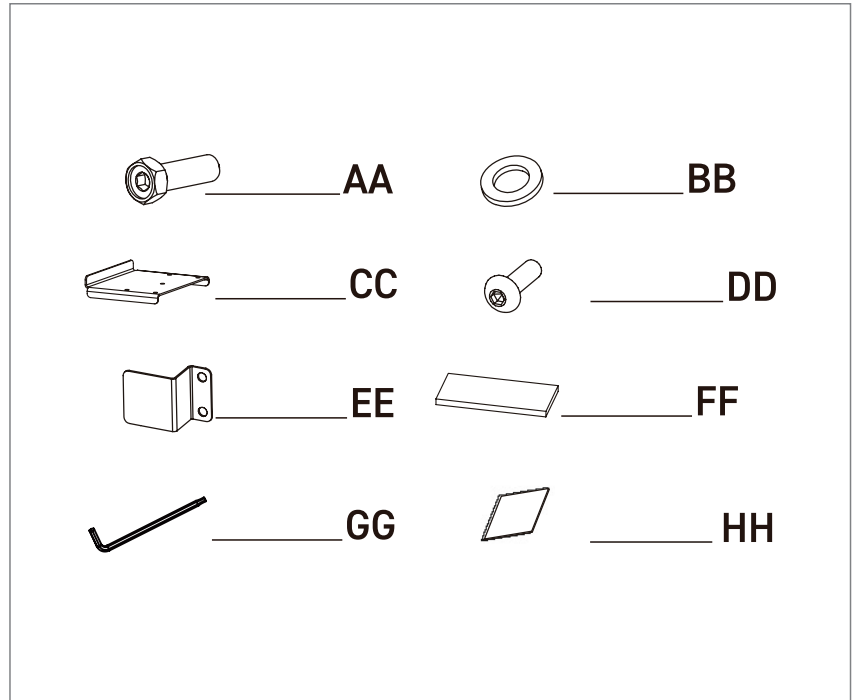
K77830

## Packaging Contents

### HARDWARE INCLUDED

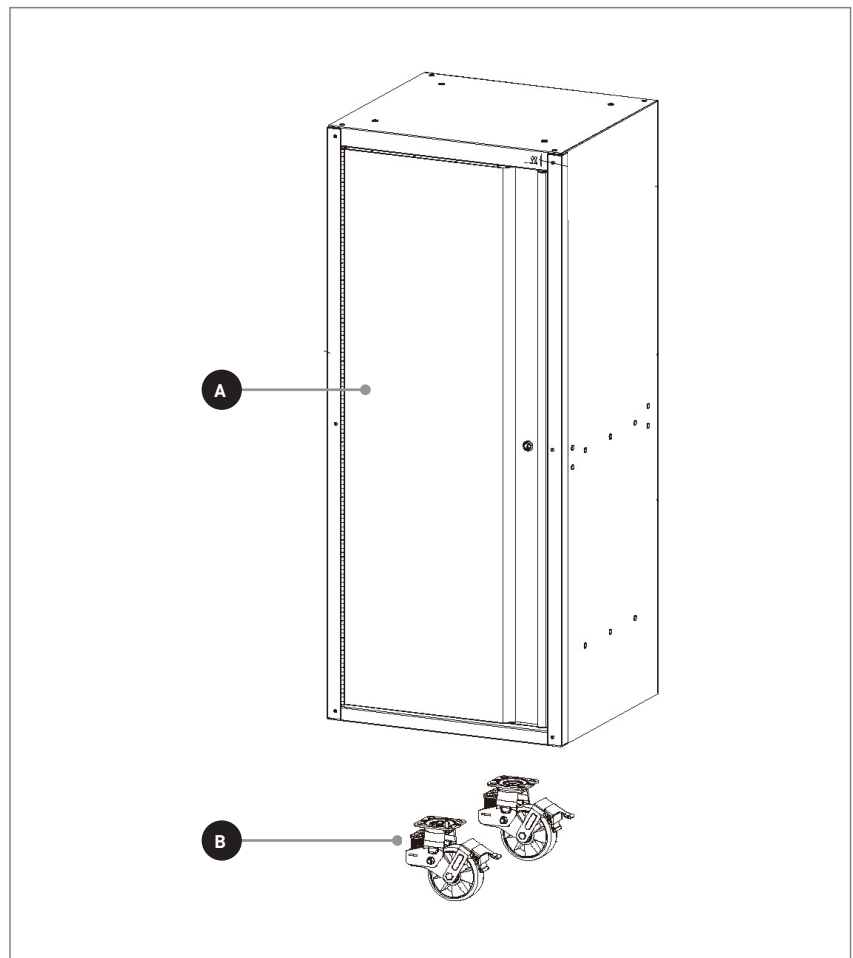
**Note:** Begin product assembly close to the final intended location of your cabinet. The product is heavy and may be difficult to move after assembly.

Part Number	QTY	Description
AA	22	HEXAGON SOCKET HEAD CAP BOLT (M8)
BB	22	WASHER (M19)
CC	1	SUPPORT BASE PLATE
DD	4	HEXAGON SOCKET BUTTON CAP BOLT
EE	2	STORAGE HOOK
FF	3	EVA SPACER
GG	1	HEX KEY
HH	16	DRAWER LINER ADHESIVE TAPE



**Note:** Keys are attached to the door.

Ref	QTY	Description
A	1	LOCKER
B	2	SWIVEL CASTER

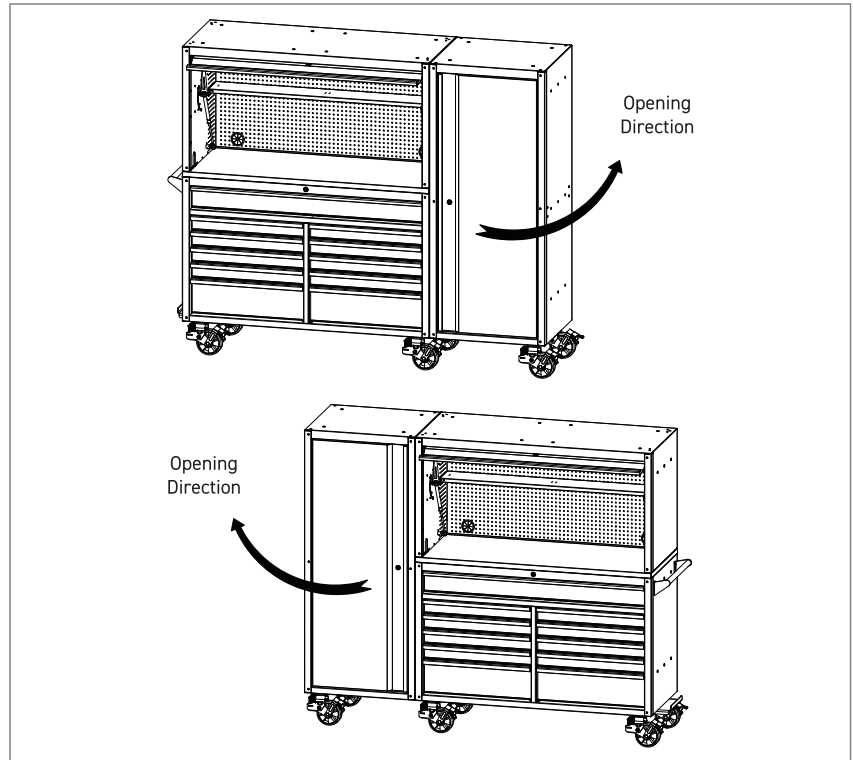


## Operation Manual

K77830

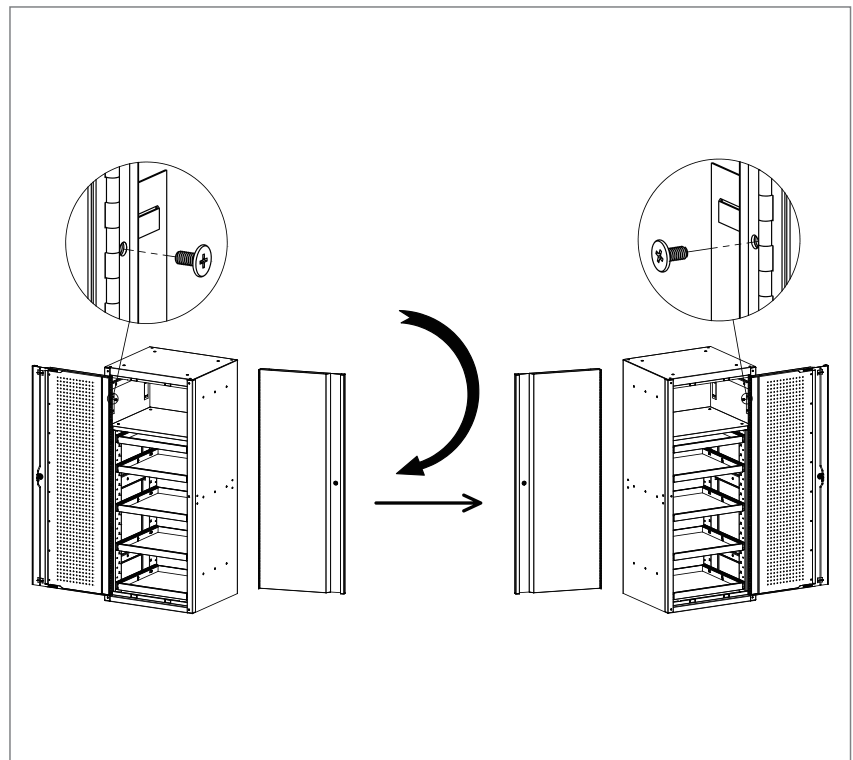
### Assembly

- Side Locker is designed to attach to either side of the Tool Trolley with or without the Hutch.
- If mounting to the RIGHT side of the Tool Trolley, then proceed to Step 1.
- If mounting to the LEFT side of the Tool Trolley, then the door is in the correct position and skip to Step 2.
- If mounting to the BOTH side of the Tool Trolley, then proceed to Step 1 & Step 2.



### INSTALLING SIDE LOCKER TO RIGHT SIDE OF THE TOOL TROLLEY

- Remove the door of the Side Locker by removing the 11 Phillips head bolts inside the hinge of the Side Locker. Flip the door and re-orient to the other side. Then re-install the door with the 11 Phillips head bolts along the hinge located on the right side of the Side Locker.
- Ensure the door is level and centered in the opening before tightening the 11 bolts.
- Remove the lock cylinder from the door, flip and reinstall for proper key orientation .



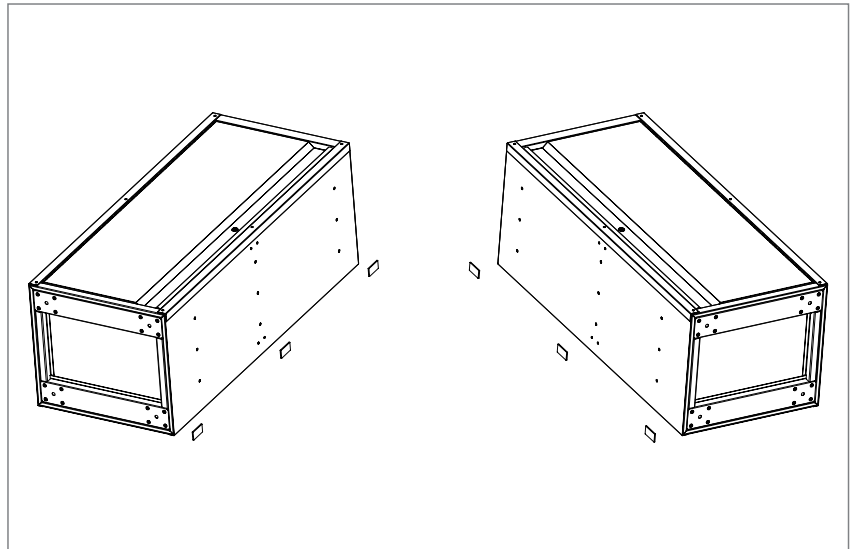
# Operation Manual

K77830

## Assembly

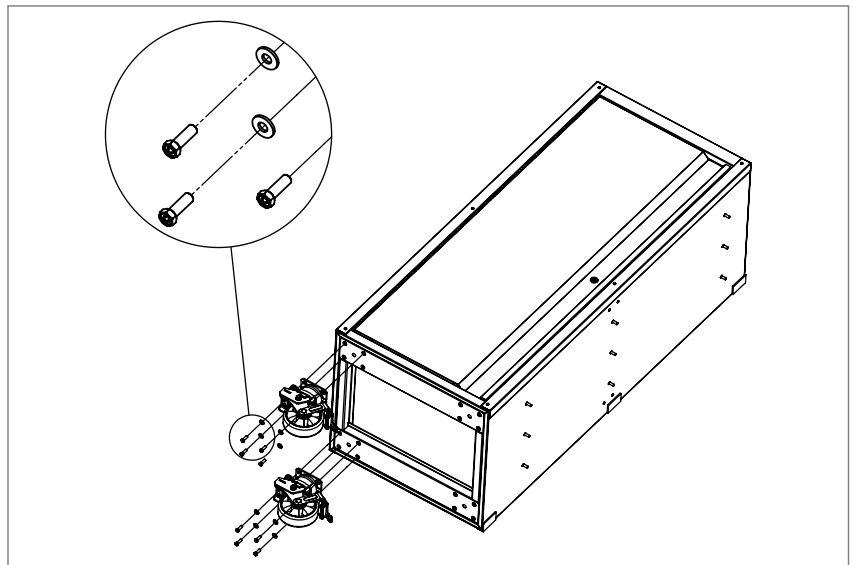
### ATTACHING THE EVA SPACERS

- Peel off the paper back from the 3 EVA Spacers (FF), and affix in the appropriate position toward the rear of the Side Locker.
- If mounting to the LEFT side of the Tool Trolley, then see Figure (3-1).
- If mounting to the RIGHT side of the Tool Trolley, then see Figure (3-2).



### ATTACHING THE CASTORS

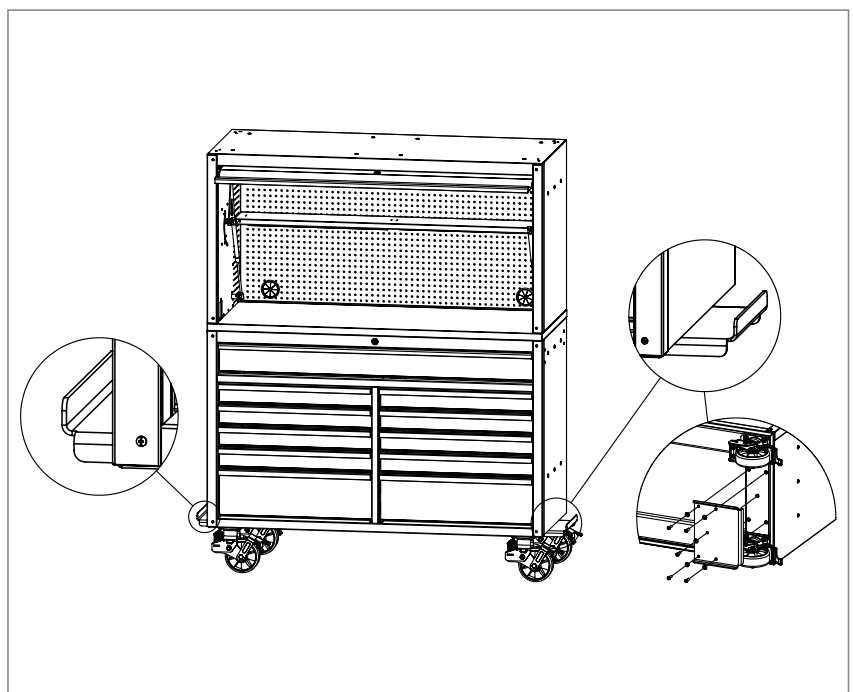
- Be sure the door is locked and lay the Side Locker down. Use packaging material to protect the finish.
- Attach the swivel castors (B) to the outer side of the Side Locker, by inserting 8 M8 Bolts (AA) and washers (BB) through the swivel castor (B). Use the Hex Key (GG) to tighten the bolts to the bottom frame.
- **Note:** If assembling Side Locker to the left side of the Tool Trolley, then castors will mount to the left side. If assembling Side Locker to the right side of the Tool Trolley, then castors will mount to the right side.



### ATTACH LOCKER SUPPORT BASE PLATE

- Attach the Support Base Plate (CC) to the bottom of the Tool Trolley by inserting 5 M8 (AA) and washers (BB) through the Base Plate (CC). Use the Hex Key (GG) to tighten the bolts to the bottom frame.
- **Note:** If assembling Side Locker to the left side of the Tool Trolley, then Base Supported will mount to the left side. If assembling Side Locker to the right side of the Tool Trolley, then Base Supported will mount to the right side.

**Caution:** Do not turn over the Tool Trolley for the installation of the Support Base Plate.



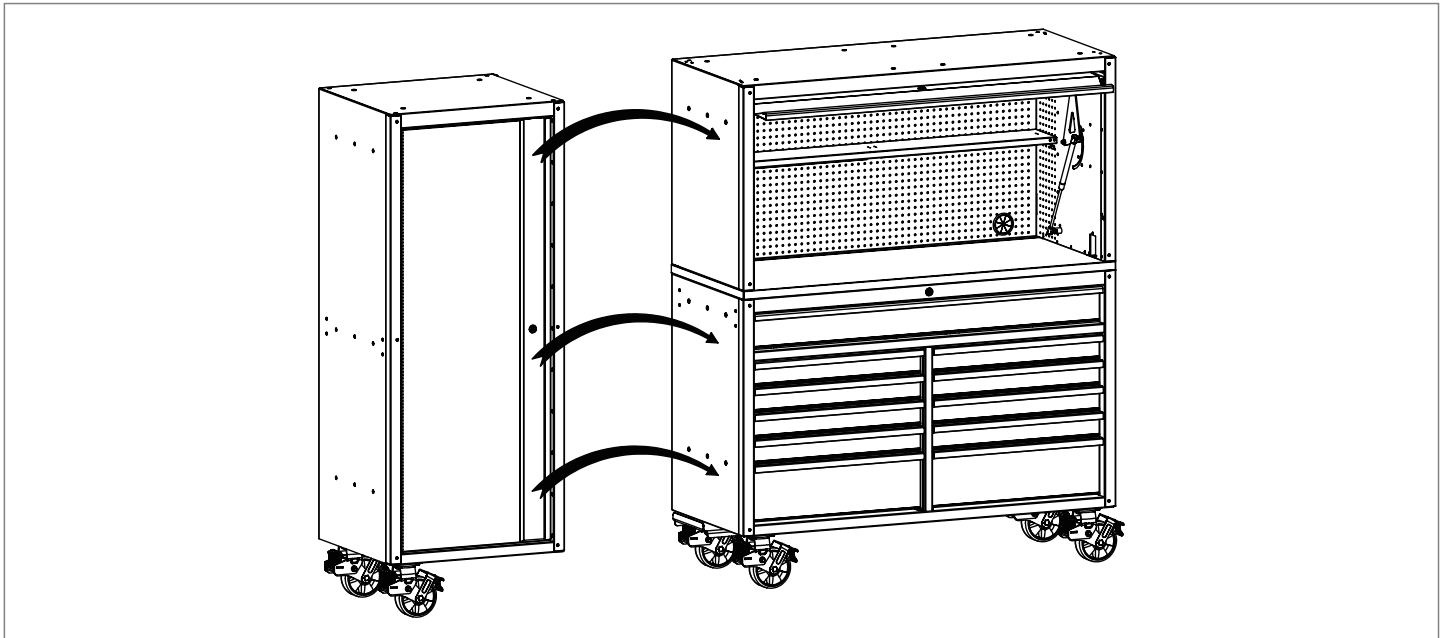
# Operation Manual

K77830

## Assembly

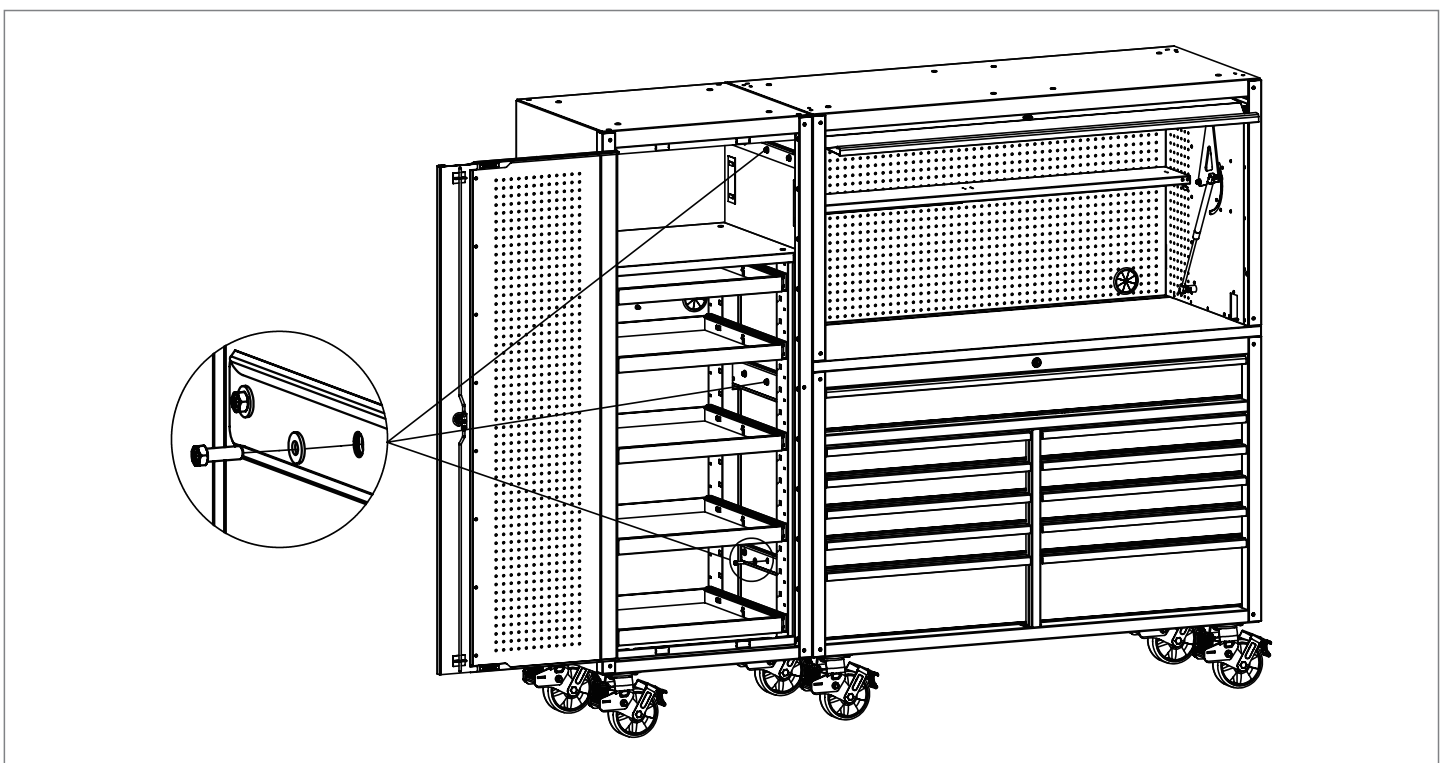
- Move and align the Tool Trolley adjacent to the bottom of the Side Locker and lock ALL wheels of the Tool Trolley.
- With 2 or more people, gently lift up the Side Locker to fully seat on the Support Base Plate (CC) to maintain balance. Then bring the units flush together ensuring proper alignment of the bolt attachment holes. Once aligned, lock the 2 Swivel Castors (B) on the Side Locker to prevent from moving.

**⚠ Caution:** Do not push the Side Locker at this time to prevent tipping. Lock the castor wheels on the Tool Trolley and Locker to prevent moving. Perform this step on even floors to ensure alignment.



### ATTACH SIDE LOCKER

- On the inside of the Side Locker use 9 pcs M8 Bolts (AA) and Washers (BB) to attach to the Tool Trolley, and Hutch.
- Only 6 M8 Bolts (AA) will be used if installing to the Tool Trolley without the Hutch.
- Do not fully tighten until all bolts are installed.
- Ensure the front and top edges of the Side Locker are flush with the Tool Trolley and Hutch, then securely tighten all Bolts (AA).



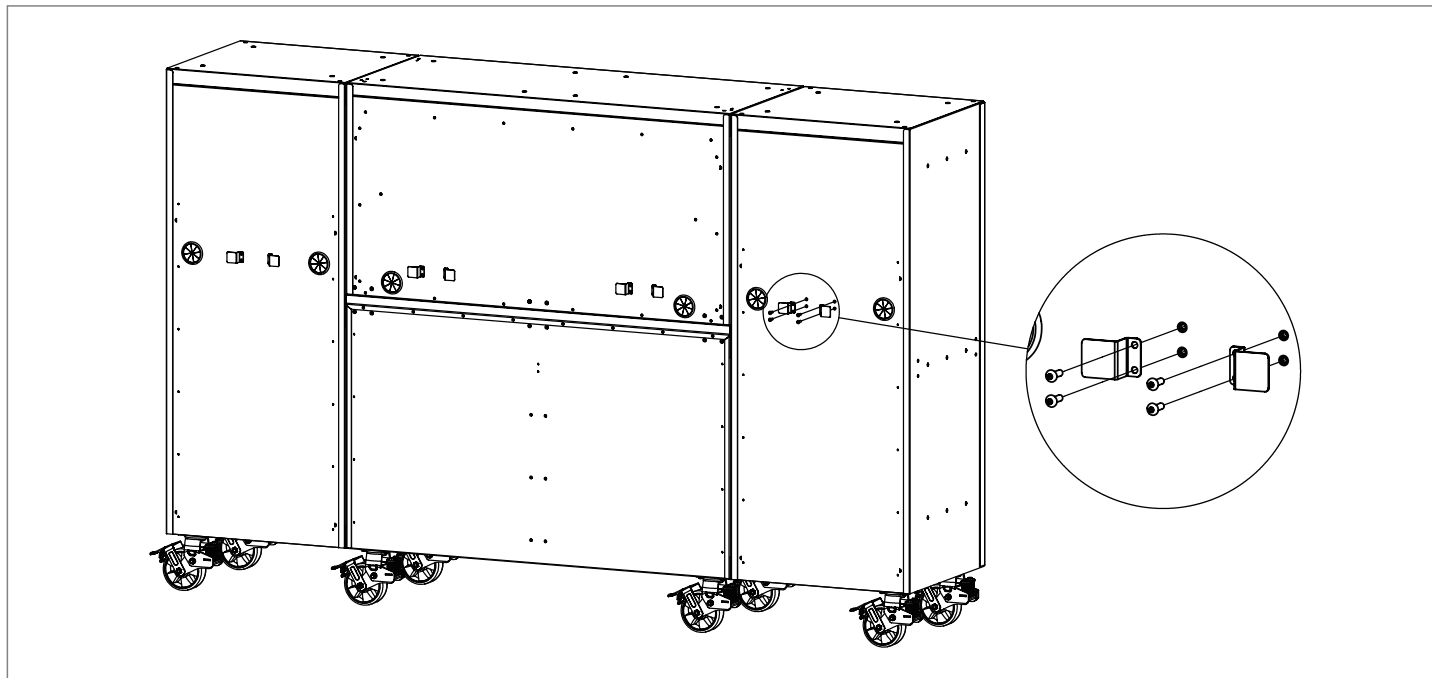
# Operation Manual

K77830

## Assembly

### ATTACH THE STORAGE HOOKS

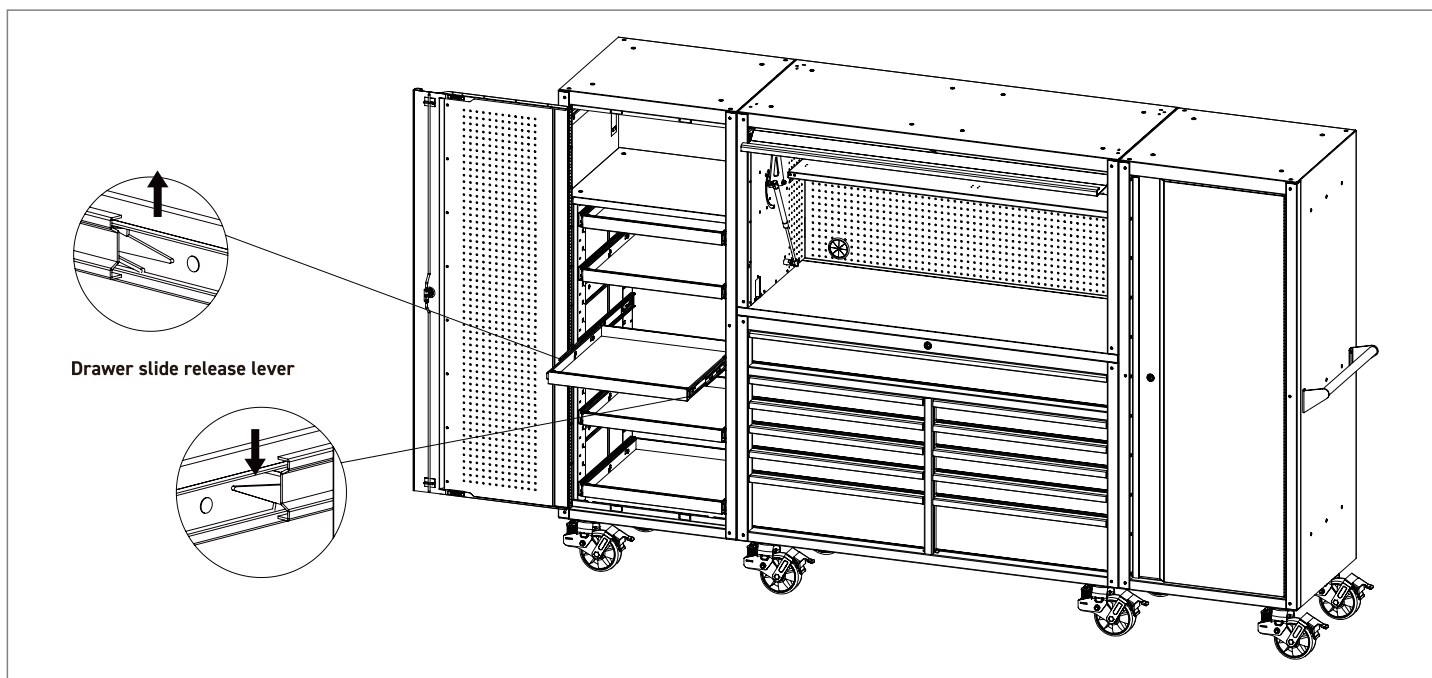
- Install the Storage Hooks (EE) on the back of the Side Locker with 4 pcs Hex button bottom cap bolt (DD).
- Wrap any loose or excess cord around the cord Storage Hooks.



### ADJUSTABLE HEIGHT SLIDING TRAYS

To adjust the height of the sliding trays:

- Remove by fully extending the empty tray.
- Push up on one slide release lever while pulling down on the other release lever.
- Gently pull the tray outward until it releases from the outer slides.

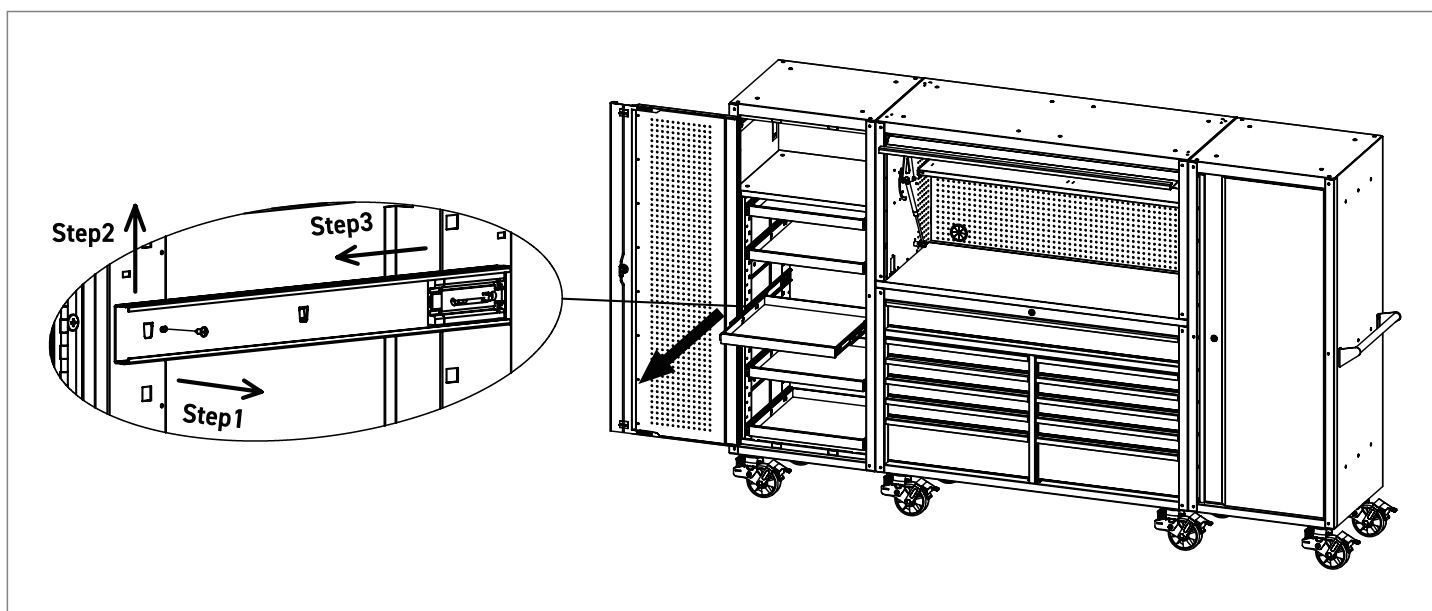


# Operation Manual

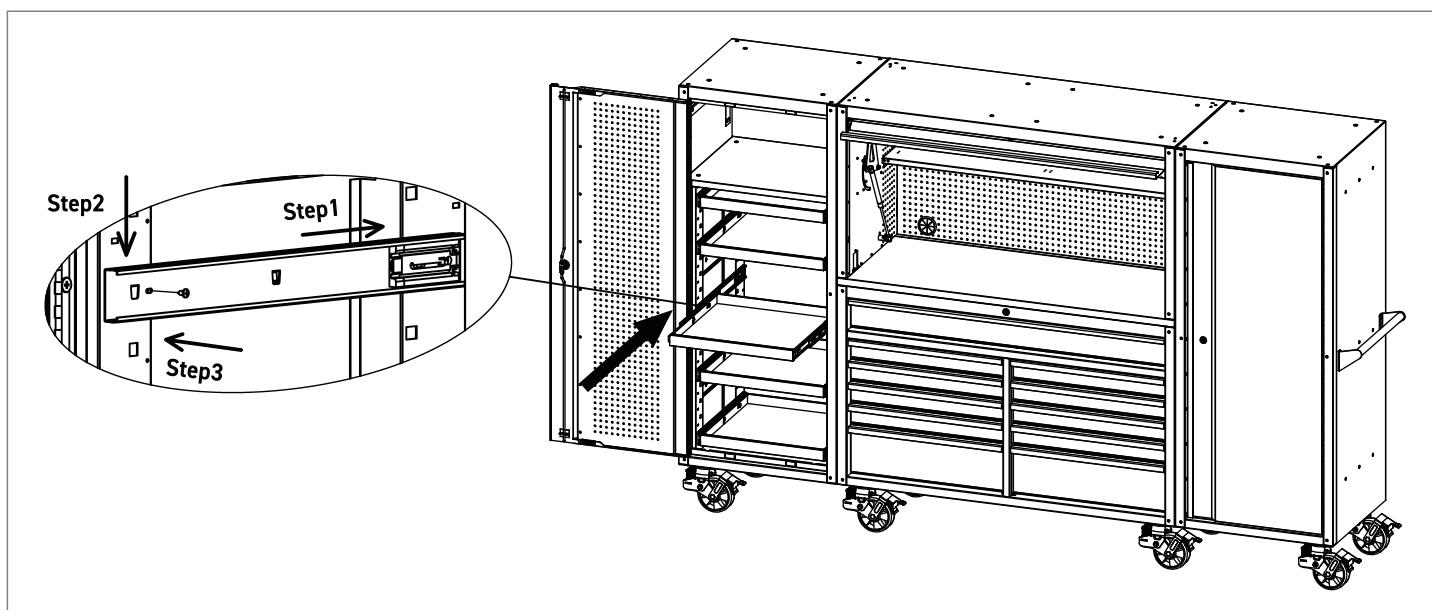
K77830

## Assembly

- Remove the Phillips head shipping screw at the front of the outer slide. This screw can be discarded as it's not needed for the tray operation.
- Push up at the front of the slide and then pull straight out to remove the outer slide from the Side Locker side wall.
- Repeat this process for the other side.



- At the desired height, re-install the outer slides by pushing the rear clip into the back channel support, then pushing the front clip down into the front support. Repeat this process for the other side. Ensure the slides are properly seated and level.
- Fully extend the slides out and gently insert the inner slide brackets of the tray into the outer slides, being careful they are properly aligned.
- Once properly inserted, completely close the tray to set the slides in their proper position and lock into the soft close mechanism.



### ADDING DRAWER LINER ADHESIVE TAPE

- Use 4 pcs of Drawer Liner Adhesive Tape (HH) to help secure the drawer liners in each drawer. The tape helps prevent shifting of the drawer liner during normal use.

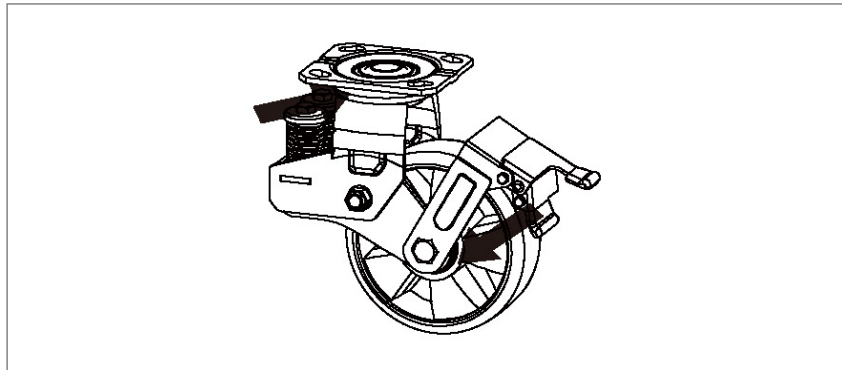
## Operation Manual

K77830

### Maintenance

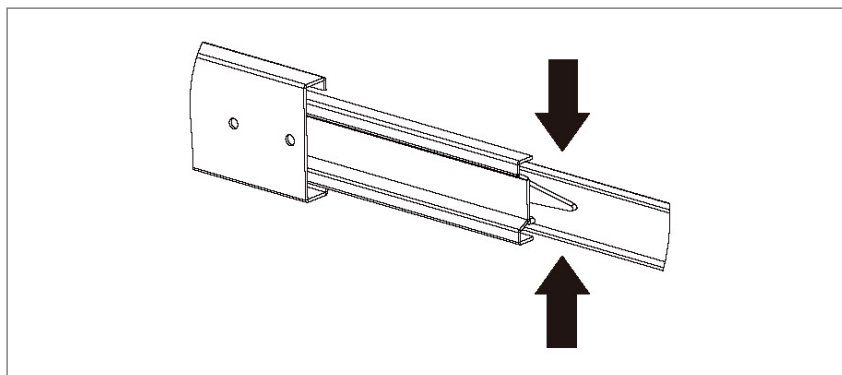
#### CASTER MAINTENANCE

- Grease the castors annually using high-quality bearing grease.



#### DRAWER MAINTENANCE

- Lubricate the slides semi-annually with high quality bearing grease.



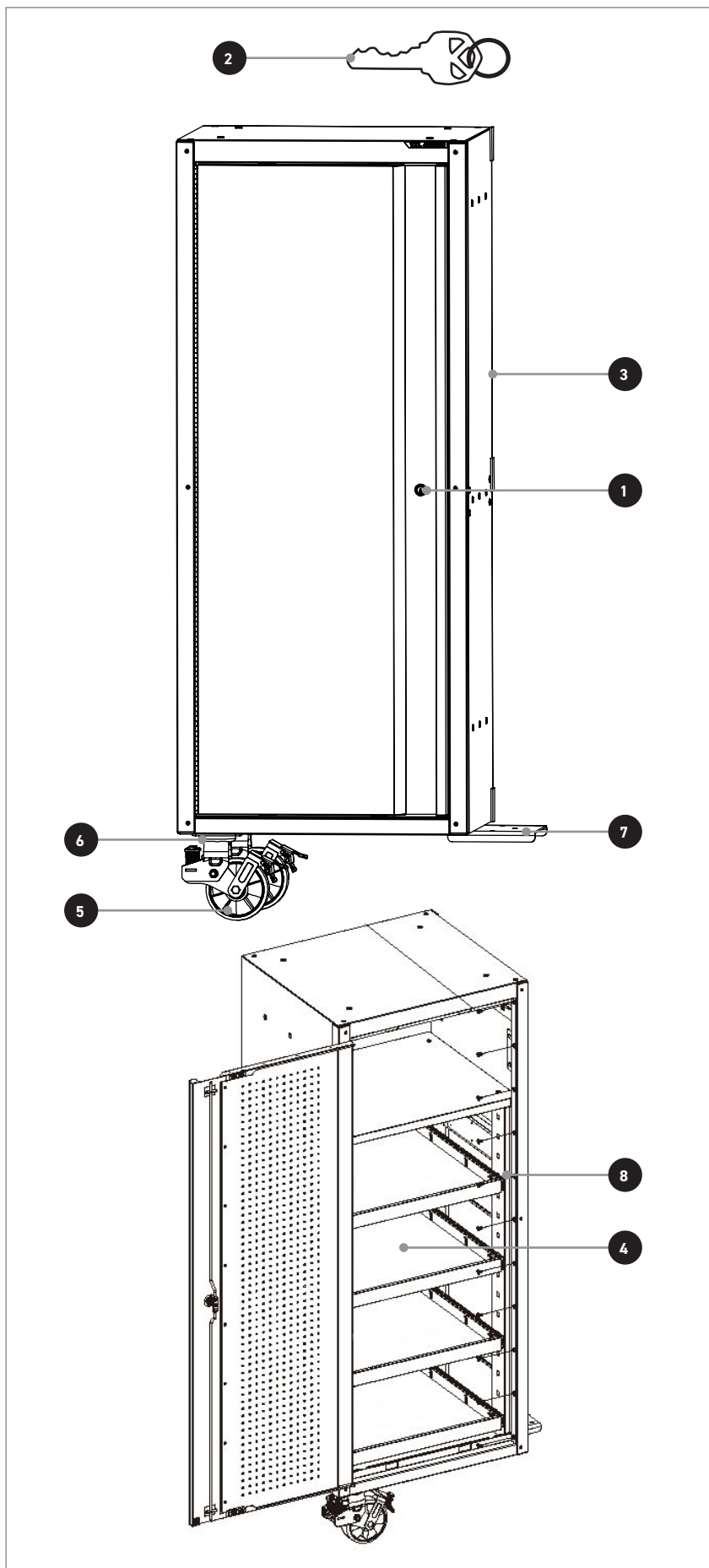
- Periodically clean the drawer fronts, drawer trim, and other surfaces with a mild detergent and water.
- Remove grease and oil with a standard nonflammable cleaning fluid.
- This product has been coated with an industrial UV-resistant powder coating for a durable and long lasting finish. To help protect the coating, do not allow harsh chemicals to remain on the surface for extended periods of time.

# Operation Manual

K77830

## Spare Parts

Ref	Part Number	QTY	Description
1	K77999-2	1	HUTCH/TOP/SIDE LOCKER LOCK & KEYS
2	K77999-6	1	KEYS ONLY
3	K77999-13	2	CABLE GROMMET X 1
4	K77999-16	1	EVA LINER PACK
5	K77999-17	2	LOCKABLE SUSPENSION SWIVEL CASTOR X 1
6	K77999-19	1	CASTOR BOLT PACK
7	K77999-21	1	SIDE LOCKER BOLT & PLATE PACK
8	K77999-25	4	BALL BEARING SLIDES (PAIR)



## General Safety Warnings

K77830

1. To reduce the risk of injury, please read and follow the safety instructions below before assembling and using this product.
2. Two or more people are required for the assembly of this product.
3. Use the brakes when this product is not being moved. This prevents the product from rolling.
4. Do not tow the product with power equipment.
5. **Do not alter this product in any manner.** For example, do not weld external lock bars or attach electrical equipment.
6. Before locking the Side Locker, ensure there are no obstructions in order for the door to completely close and lock bars to work properly.



**Caution:** Do not attach or mount this product to a vehicle or mobile trailers. This may cause personal injury or product damage. Mounting this product to any vehicle or mobile trailers in any manner will void warranty.



**Caution:** Do not stand on this product. You may fall which may cause personal injury or product damage.



**Caution:** Be careful during assembly. The product may become unstable and tip, which may cause personal injury or product damage.



**Caution:** Keep the product on level surfaces. The product may become unstable and tip if stored or moved on an unlevel surface, which may cause personal injury or product damage.



**Caution:** Lock the door before moving this product. The door could come open and make the product unstable, which may cause personal or product damage.

### OFFICE CONTACT DETAILS



Phone: 1300 657 528

Email: [enquiries@kincrome.com.au](mailto:enquiries@kincrome.com.au)Website: [www.kincrome.com.au](http://www.kincrome.com.au)

### WARRANTY



Our goods and services come with guarantees that cannot be excluded under the Australian Consumer Law. For major failures with the service, you are entitled: -to cancel your service contract with us; and -to a refund for the unused portion, or to compensation for its reduced value. You are also entitled to choose a refund or replacement for major failures with goods. If a failure with the goods or a service does not amount to a major failure, you are entitled to have the failure rectified in a reasonable time. If this is not done you are entitled to a refund for the goods and to cancel the contract for the service and obtain a refund of any unused portion. You are also entitled to be compensated for any other reasonably foreseeable loss or damage from a failure in the goods or service'. Kincrome Australia Pty Ltd of 3 Lakeview Drive, Caribbean Park, Scoresby, Victoria (Tel 1300 657 528) also provides the Kincrome Lifetime Guarantee and 12-Month Warranty (Kincrome Express Warranties) in respect of some of its products. If a product is covered by a Kincrome Express Warranty and it has materials or workmanship defects (other than defects caused by abnormal or non warranted use) which are covered under the terms of the relevant Kincrome Express Warranty, you can, at your cost, send the product to the above address for repair or replacement. Your rights under a Kincrome Express Warranty are in addition to any other rights you have under the Australian Consumer Law or other applicable laws. For further details and terms please check our product guide, visit [www.kincrome.com.au](http://www.kincrome.com.au) or call us. Every effort is made to ensure advertised stock is available, but due to factors beyond the control of Kincrome Australia Pty. Ltd, not all products advertised in this catalogue may be available at all stores. Kincrome Australia Pty. Ltd. reserves the right to correct printing errors. All sizes shown are approximate only. Accessories shown do not come with the product unless otherwise specified. Due to printing process, colours in this catalogue may vary slightly to actual item. E. & O. E.© Copyright 2022. Reproduction in whole or in part is prohibited without written approval.