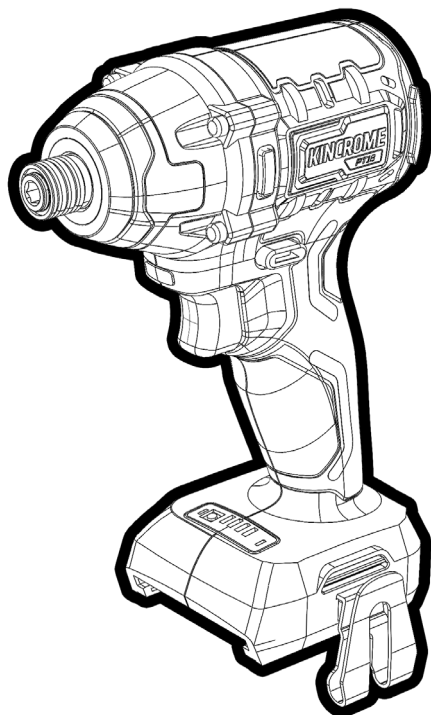


KINCROME

PT18

18V Brushless 1/4" Impact Driver



K23015

ED1 DECEMBER 2023



WARNING: Do not allow persons to operate or assemble the Impact Drivers until they have read these instructions and developed a thorough understanding on how an Impact Driver works.

General Power Tool Safety Warnings

K23015



WARNING Read all safety warnings and all instructions. Failure to follow the warnings and instructions may result in electric shock, fire and/or serious injury.

Save all warnings and instructions for future reference.

The term "power tool" in the warnings refers to your mains-operated (corded) power tool or battery-operated (cordless) power tool.

1) Work area safety

- a) **Keep work area clean and well lit.**
Cluttered or dark areas invite accidents.
- b) **Do not operate power tools in explosive atmospheres, such as in the presence of flammable liquids, gases or dust.** *Power tools create sparks which may ignite the dust or fumes.*
- c) **Keep children and bystanders away while operating a power tool.** *Distractions can cause you to lose control.*

2) Electrical safety

- a) **Power tool plugs must match the outlet. Never modify the plug in any way. Do not use any adapter plugs with earthed (grounded) power tools.** *Unmodified plugs and matching outlets will reduce risk of electric shock.*
- b) **Avoid body contact with earthed or grounded surfaces, such as pipes, radiators, ranges and refrigerators.** *There is an increased risk of electric shock if your body is earthed or grounded.*
- c) **Do not expose power tools to rain or wet conditions.**
Water entering a power tool will increase the risk of electric shock.
- d) **Do not abuse the cord. Never use the cord for carrying, pulling or unplugging the power tool. Keep cord away from heat, oil, sharp edges or moving parts.** *Damaged or entangled cords increase the risk of electric shock.*
- e) **When operating a power tool outdoors, use an extension cord suitable for outdoor use.** *Use of a cord suitable for outdoor use reduces the risk of electric shock.*
- f) **If operating a power tool in a damp location is unavoidable, use a residual current device (RCD) protected supply.** *Use of an RCD reduces the risk of electric shock.*

3) Personal safety

- a) **Stay alert, watch what you are doing and use common sense when operating a power tool. Do not use a power tool while you are tired or under the influence of drugs, alcohol or medication.** *A moment of inattention while operating power tools may result in serious personal injury.*
- b) **Use personal protective equipment. Always wear eye protection.** *Protective equipment such as dust mask, non-skid safety shoes, hard hat, or hearing protection used for appropriate conditions will reduce personal injuries.*
- c) **Prevent unintentional starting. Ensure the switch is in the off-position before connecting to power source and/or battery pack, picking up or carrying the tool.** *Carrying power tools with your finger on the switch or energising power tools that have the switch on invites accidents.*
- d) **Remove any adjusting key or driver before turning the power tool on.** *A driver or a key left attached to a rotating part of the power tool may result in personal injury.*
- e) **Do not overreach. Keep proper footing and balance at all times.** *This enables better control of the power tool in unexpected situations.*

- f) **Dress properly. Do not wear loose clothing or jewellery. Keep your hair, clothing and gloves away from moving parts.** *Loose clothes, jewellery or long hair can be caught in moving parts.*
- g) **If devices are provided for the connection of dust extraction and collection facilities, ensure these are connected and properly used.** *Use of dust collection can reduce dust-related hazards.*
- h) **Do not let familiarity gained from frequent use of tools allow you to become complacent and ignore tool safety principles.** *A careless action can cause severe injury within a fraction of a second.*

4) Power tool use and care

- a) **Do not force the power tool. Use the correct power tool for your application.** *The correct power tool will do the job better and safer at the rate for which it was designed.*
- b) **Do not use the power tool if the switch does not turn it on and off.** *Any power tool that cannot be controlled with the switch is dangerous and must be repaired.*
- c) **Disconnect the plug from the power source and/or the battery pack from the power tool before making any adjustments, changing accessories, or storing power tools.** *Such preventive safety measures reduce the risk of starting the power tool accidentally.*
- d) **Store idle power tools out of the reach of children and do not allow persons unfamiliar with the power tool or these instructions to operate the power tool.** *Power tools are dangerous in the hands of untrained users.*
- e) **Maintain power tools. Check for misalignment or binding of moving parts, breakage of parts and any other condition that may affect the power tool's operation. If damaged, have the power tool repaired before use.** *Many accidents are caused by poorly maintained power tools.*
- f) **Keep cutting tools sharp and clean.** *Properly maintained cutting tools with sharp cutting edges are less likely to bind and are easier to control.*
- g) **Use the power tool, accessories and tool bits etc. in accordance with these instructions, taking into account the working conditions and the work to be performed.** *Use of the power tool for operations different from those intended could result in a hazardous situation.*
- h) **Keep handles and grasping surfaces dry, clean and free from oil and grease.** *Slippery handles and grasping surfaces do not allow for safe handling and control of the tool in unexpected situations.*

5) Battery tool use and care

- a) **Recharge only with the charger specified by the manufacturer.** *A charger that is suitable for one type of battery pack may create a risk of fire when used with another battery pack.*
- b) **Use power tools only with specifically designated battery packs.** *Use of any other battery packs may create a risk of injury and fire.*
- c) **When battery pack is not in use, keep it away from other metal objects, like paper clips, coins, keys, nails, screws or other small metal objects, that can make a connection from one terminal to another.** *Shorting the battery terminals together may cause burns or a fire.*

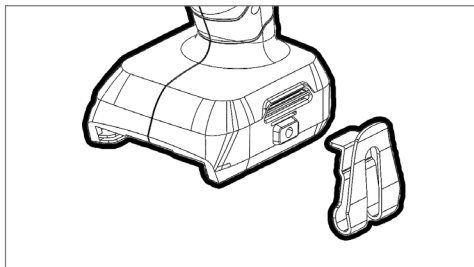
Tool Assembly

K23015

- d) Under abusive conditions, liquid may be ejected from the battery; avoid contact. If contact accidentally occurs, flush with water. If liquid contacts eyes, additionally seek medical help. Liquid ejected from the battery may cause irritation or burns.

6) Service

- a) Have your power tool serviced by a qualified repair person using only identical replacement parts. This will ensure that the safety of the power tool is maintained.



Additional Safety Instructions
impact driver

WARNING! Wear ear protectors when Impact drilling
Exposure to noise can cause hearing loss.

- a) Hold power tool by insulated gripping surfaces, when performing an operation the cutting accessory may contact hidden wiring or its own cord. Cutting accessory contacting a "live" wire may make exposed metal parts of the power tool "live" and could give the operator an electric shock.

INSTALLING THE BELT CLIP

Place provided belt clip in the desired position on the base of the Impact Wrench. Using a Phillips head #2 screwdriver, place screw through clip into screw hole & hand tighten until you feel resistance & clip is adequately tight.

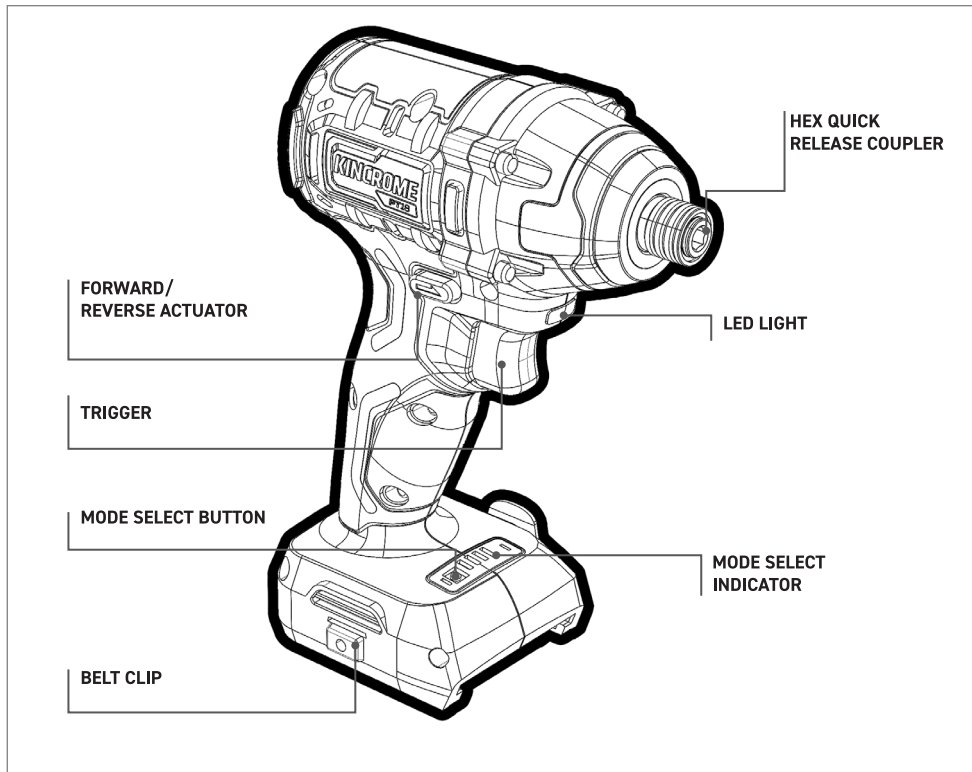
Symbols

The rating plate on your tool may show symbols. These represent important information about the product or instructions on its use.

VDC	Voltage direct current, DC		Waste electrical products should not be disposed of with household waste. Please recycle where facilities exist. Check with your Local Authority or retailer for recycling advice.
	Refer to instruction manual/booklet		
	Wear ear protection		General warning
	Wear eye protection		Regulator compliance mark
No.	No load speed	RPM/min⁻¹	Revolutions per minute
“	Inches symbol	BPM	Beats per minute

Know your Product

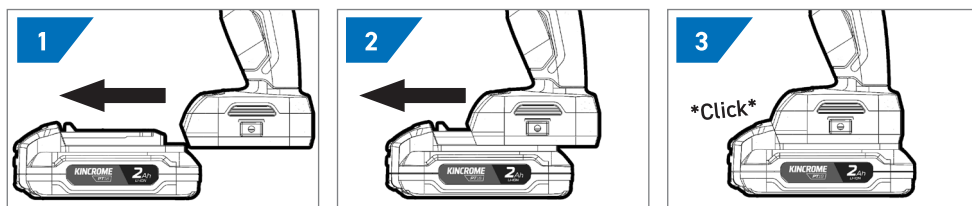
K23015



Specifications

Voltage	18V d.c.	Maximum torque	225 Nm
Drive type	1/4" Hex	No load speed	0 - 2,800 min ⁻¹
Mode selection	Low speed: 65Nm 990min ⁻¹ Medium speed: 150Nm 2,080min ⁻¹ High speed: 225Nm 2,800min ⁻¹ Auto Mode Reverse Auto Mode Forward	Impact rate	0 - 3,600 BPM
		Weight (no battery)	1.18 kg

How To Insert Battery On Tool



1. ALIGN BATTERY RIBS WITH TOOL

2. SLIDE INTO TOOL

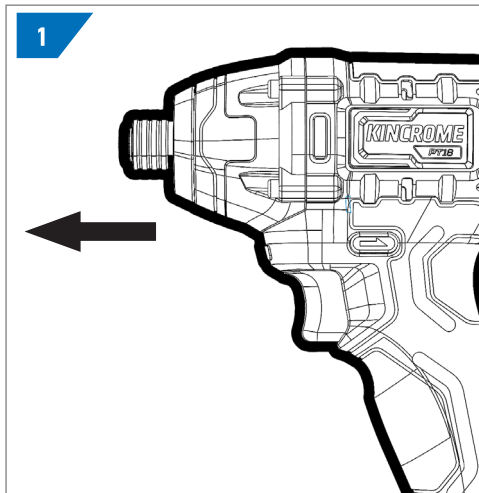
3. STOP WHEN YOU HEAR IT CLICK IN PLACE

How To Insert A Drill/Driver Bit

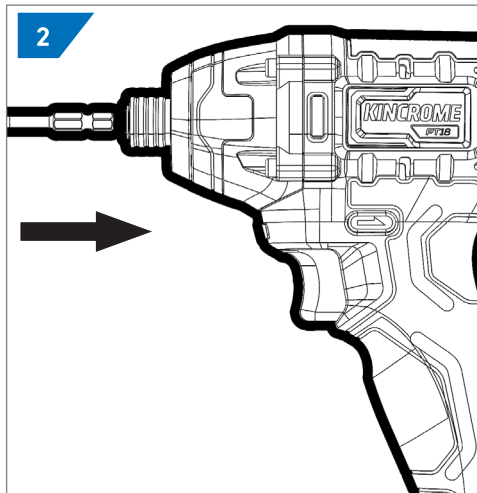
K23015



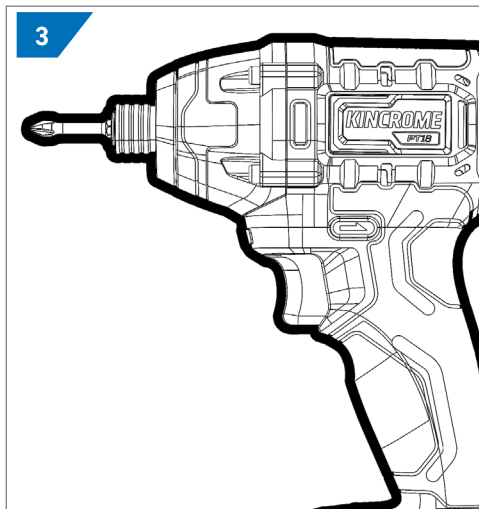
WARNING: Always ensure the tool has completely stopped and the battery is removed prior to any maintenance.
WARNING: Do not let familiarity gained from frequent use of tools allow you to become complacent and ignore tool safety principles. A careless action can cause severe injury within a fraction of a second.



1. PULL AND HOLD 1/4" HEX QUICK RELEASE COUPLER FORWARD.

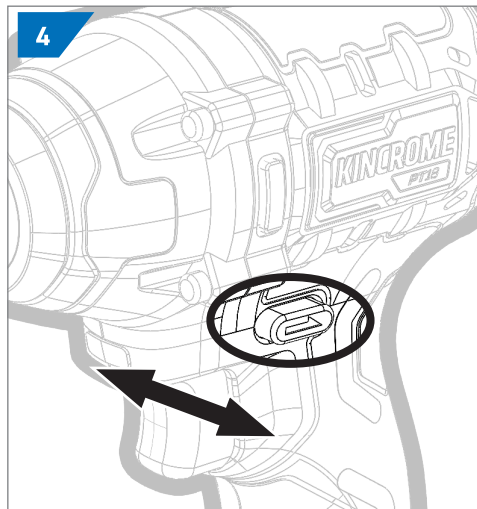


2. INSERT ANY STANDARD 1/4" HEX DRILL OR DRIVER BIT.



3. RELEASE 1/4" HEX QUICK RELEASE COUPLER.

Ensure bit is inserted correctly and is secure.



4. SET IMPACT DRIVER DIRECTION FOR USE.

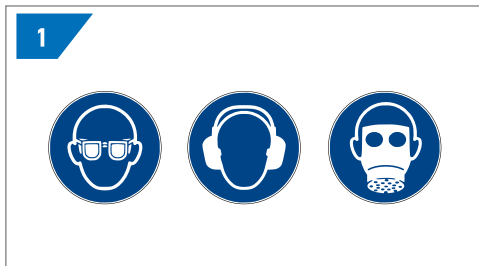
Set the forward/reverse actuator to the desired direction:
 Push in from the left - Unscrewing and removing.
 Push in from the right - Fastening, drilling and installing.

Impact Driver Basics

K23015

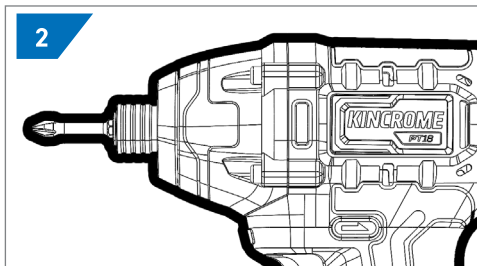


WARNING: Always ensure the tool has completely stopped and the battery is removed prior to any maintenance.
WARNING: Do not let familiarity gained from frequent use of tools allow you to become complacent and ignore tool safety principles. A careless action can cause severe injury within a fraction of a second.



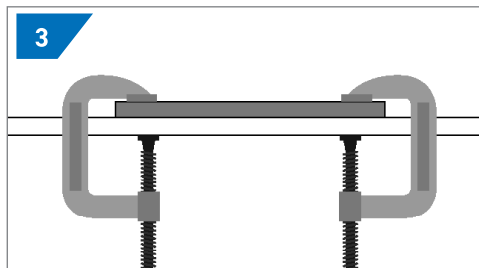
1. ENSURE SAFETY

Always wear safety glasses when working with the driver. Make sure to secure your hair and any loose fitting clothes. In appropriate situations make sure you wear ear muffs, a mask or a respiratory mask.



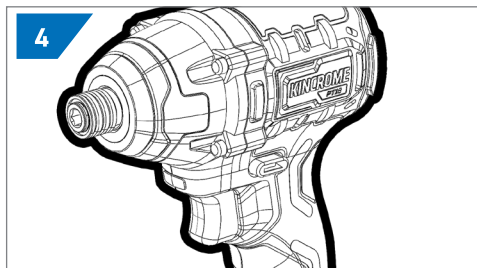
2. MAKE SURE YOU HAVE THE RIGHT ACCESSORY

Caution: Use gloves when handling impact accessories and sockets as they may be hot after use and cause personal injuries. Ensure you have the correct impact rated and size socket or accessory for the job.



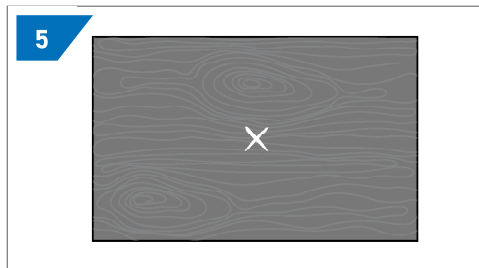
3. SECURE WORKPIECE

Make sure your workpiece is securely fastened.



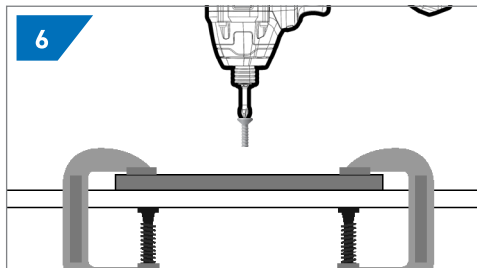
4. ENSURE DRIVER IS SET UP CORRECTLY

Ensure the forward/reverse actuator is in the correct position, the correct mode for application has been set and accessory the has been attached securely to the hex quick release coupler.



5. MEASURE TWICE, SCREW ONCE

Have your job planned and marked out.



6. SCREW YOUR WORKPIECE

Hold the impact driver securely and press the trigger whilst applying firm pressure directly down on the impact driver to stop the fastener from slipping. Slowly increase pressure on the trigger until the screw or bolt is tightened to desired depth.

Impact Driver Features

K23015

The Kincrome Impact Driver has an internal battery protection device, this electronic control device ensures a long service life.

1. OVERLOAD PROTECTION

If the Impact Driver becomes overloaded, the motor will stop functioning and the LED light will flash 3 times. It is crucial to promptly alleviate the load on the tool by releasing the trigger. Once the load is relieved, you can restart the tool as usual. Please be aware that consistently overloading the tool may result in permanent damage to either the tool itself or the battery pack. Therefore, it is important to avoid prolonged overloading to ensure optimal performance and longevity.

2. TEMPERATURE OVERLOAD PROTECTION

In the event of excessive load or when the battery temperature exceeds the acceptable range, the electronic control device will shut off the tool. This safety feature is designed to protect the tool and prevent any potential damage. The tool will remain turned off until the temperature returns to the optimal range.'

3. PROTECTION AGAINST DEEP DISCHARGING

The Li-ion battery is equipped with protection against over-discharging. When the battery is depleted, the electronic control device shuts off, and the tool motor ceases operation.

To continue using the tool, remove and charge immediately to avoid any battery deterioration.

Please note that the indicated battery capacity may appear lower than the actual charge during use or directly after use.

4. TORQUE MODE SETTING

You have the option to adjust the torque in four distinct steps: 4 (Self-stop function, reverse only), 1 (Low) , 2 (Medium), and 3 (High) . This provides the flexibility to tighten according to the specific task at hand.

By pressing the button, you can cycle through the different torque levels, allowing you to easily switch between settings.

It is worth noting that you can modify the impact force within approximately a minute after releasing the trigger. This feature enables you to make prompt adjustments as needed for your work.

5. SELF-STOP FUNCTION

The self-stop function can only be used in reverse that prevents the nut or fixing spinning off and falling.

6. AUTO MODE REVERSE

Full speed until stop impacting, then 850 RPM.

7. AUTO MODE FORWARD

850 RPM until impacting, then full speed.

Maintenance

K23015

This power tool normally requires no maintenance; from time to time the ventilation slots on the motor casing should be cleaned out. If the unit should become defective, repair should be performed by an authorized service agent for electric tools.

When cleaning plastic parts, it is advisable to refrain from using solvents. Many types of commercial solvents can potentially harm plastics and cause damage. Instead, opt for clean cloths to effectively eliminate dirt, dust, oil, grease and similar substances.

TROUBLESHOOTING

1. LED LIGHT DOES NOT ILLUMINATE

- Check the battery level indicator to ensure the battery is properly charged.
- Check the battery is firmly connected to the Impact driver.

2. LED LIGHT FLASHES BUT PRODUCT DOES NOT WORK.

- The overload protection has activated; Attempt to resolve the issue by removing the battery and re-inserting it.
- The battery voltage is insufficient; Inspect the charge indicator, If there are 2 or fewer lights displayed, recharge the battery.
- The temperature of either the battery or the tool has surpassed the recommended temperature rating. Allow both the tool and the battery to rest for 30 minutes.

3. THE TRIGGER IS LOCKED

Make sure that the forward/reverse actuator is in the correct position: push it from the left to undo and remove, or push it from the right for drilling and installation. If the button is between these two settings, the trigger will be locked.

If the driver is causing the screw head to strip, ensure that you start with a low torque setting and firmly hold the drill onto the screw head. Increase the torque setting as needed.

If the driver cuts out during use, it is possible that the battery charge is completely depleted. Place the battery on the charging cradle for 3-5 hours.

In case you notice sparking visible through the housing air vents, it is normal to see a small amount of sparking. This does not indicate any problem or malfunction.

Spare Parts

For a full list of available spare parts for this item visit the Kinchrome website www.kinchrome.com.au or alternatively contact Kinchrome Customer Service.

Office Contact Details

Phone: 1300 657 528

Email: enquiries@kinchrome.com.au

Website: www.kinchrome.com.au

Warranty



3 YEAR STANDARD
+2 FURTHER YEARS WHEN
REGISTERED ONLINE

Our goods and services come with guarantees that cannot be excluded under the Australian Consumer Law. For major failures with the service, you are entitled: -to cancel your service contract with us; and -to a refund for the unused portion, or to compensation for its reduced value. You are also entitled to choose a refund or replacement for major failures with goods. If a failure with the goods or a service does not amount to a major failure, you are entitled to have the failure rectified in a reasonable time. If this is not done you are entitled to a refund for the goods and to cancel the contract for the service and obtain a refund of any unused portion. You are also entitled to be compensated for any other reasonably foreseeable loss or damage from a failure in the goods or service. Kinchrome Australia Pty Ltd of 3 Lakeview Drive, Caribbean Park, Scoresby, Victoria (Tel 1300

657 528) also provides the Kinchrome Limited Lifetime Guarantee, 5 Year Warranty, 5 Year (3+2) warranty, 3 Year Warranty, 2 Year Warranty and 12-Month Warranty (Kinchrome Express Warranties) in respect of some of its products. If a product is covered by a Kinchrome Express Warranty and it has materials or workmanship defects (other than defects caused by abnormal or non warranted use) which are covered under the terms of the relevant Kinchrome Express Warranty, you can, at your cost, send the product to the above address for repair or replacement. Your rights under a Kinchrome Express Warranty are in addition to any other rights you have under the Australian Consumer Law or other applicable laws. For further details and terms please check our product guide, visit www.kinchrome.com.au or call us. Every effort is made to ensure advertised stock is available, but due to factors beyond the control of Kinchrome Australia Pty. Ltd, not all products advertised in this catalogue may be available at all stores. Kinchrome Australia Pty. Ltd. reserves the right to correct printing errors. All sizes shown are approximate only. Accessories shown do not come with the product unless otherwise specified. Due to printing process, colours in this catalogue may vary slightly to actual item. E. & O. E.© Copyright 2022. Reproduction in whole or in part is prohibited without written approval.