



TOOL TROLLEY

11 DRAWER

K7308

Operation Manual

Caution: Take Safety Precautions When Using Your Toolbox



Do not open more than one drawer at a time.



Do not step on drawers.



Do not let children near the Toolbox.



Do not separate Chest from Trolley.



Do not exceed Drawer Load Limit



Not suitable for mounting in Vehicles



Lock drawers and lid before moving the Toolbox.

IMPORTANT:

THIS OPERATING MANUAL CONTAINS IMPORTANT SAFETY INFORMATION. READ CAREFULLY AND UNDERSTAND ALL INFORMATION BEFORE OPERATING TOOL TROLLEY. SAVE THIS MANUAL FOR FUTURE USE



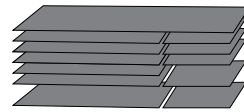
Parts List



Keys x 2

Washers x 16

Bolts x 16



12 x EVA Liners

TOOL TROLLEY SPECIFICATIONS

	Width	Depth	Height
Overall	1040mm	460mm	1045mm
Super Wide Drawer	925mm	415mm	83mm
Large Shallow	560mm	415mm	28mm
Large Medium	560mm	415mm	55mm
Large Deep	560mm	415mm	138mm
Small Shallow	288mm	415mm	28mm
Small Medium	288mm	415mm	55mm
Small Deep	288mm	415mm	138mm
Small X-Deep	288mm	415mm	300mm
Castors	5" x 2" Heavy Duty Lockable		
Weight	66Kg		

MAINTENANCE

- Periodically tighten all hardware
- Lubricate the slides twice a year
- Lubricate the lock with graphite annually
- Use a damp Microfibre cloth to clean all surfaces

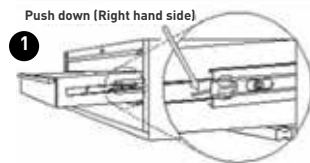
Assembly Instructions

1 TO REMOVE & REPLACE DRAWERS

DRAWER REMOVAL

Pull drawer out until fully extended. Press down right hand side to release lever. At the same time, pull up left hand side release lever.

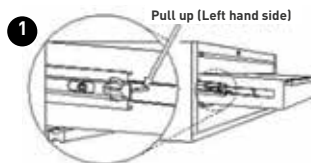
Pull the drawer outward until it releases from the drawer slide.



2 DRAWER REPLACEMENT

Extend the drawer slides from the tool chest. Insert the brackets on each side of the drawer into the slots in the drawer slides, being careful that they are properly positioned.

Once properly inserted, completely close te drawer to set in the slides in the proper positions.



CAUTION

For your safety, **DO NOT** lift the chest by yourself. Failure to follow this warning may result in personal injury and damage to the tool chest.

TOOLS & ASSISTANCE NEEDED



2 People Lift

Castors



Hex Key



TOOL TROLLEY

11 DRAWER

K7308

Assembly Instructions

CHEST & TROLLEY COMBINATION TO PLACE CHEST ON CABINET

- 1 When securing the Top Chest and Bottom Roller Cabinet together, remove the liner so that the chest bottom will fit tightly into the recessed area of cabinet. This will help prevent the chest from slipping or tipping over.

TO INSTALL CASTORS

- 2 Estimated assembly time: 20 minutes
Tools required for assembly: Hex Key Wrench (included)

1. Lay the tool chest on its back when installing castors
2. Using the hex key wrench provided, install the 2 rigid castors on the bottom of the chest as shown below
3. Follow the same procedure to install the 2 swivel castors on the opposite side.

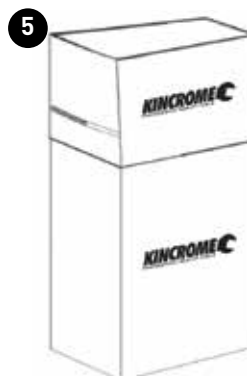
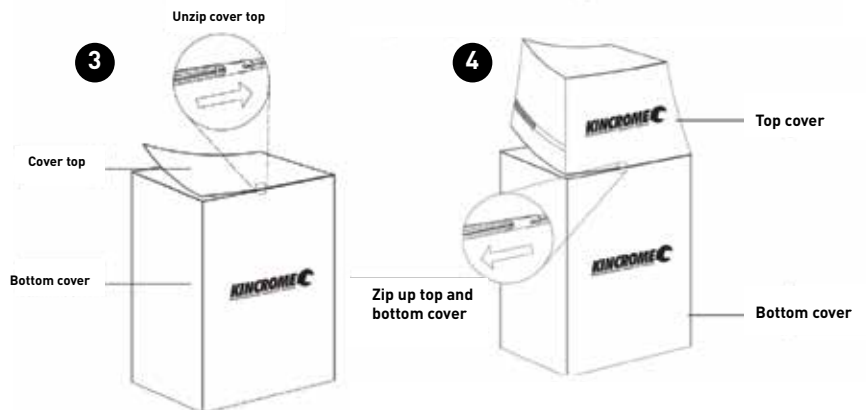
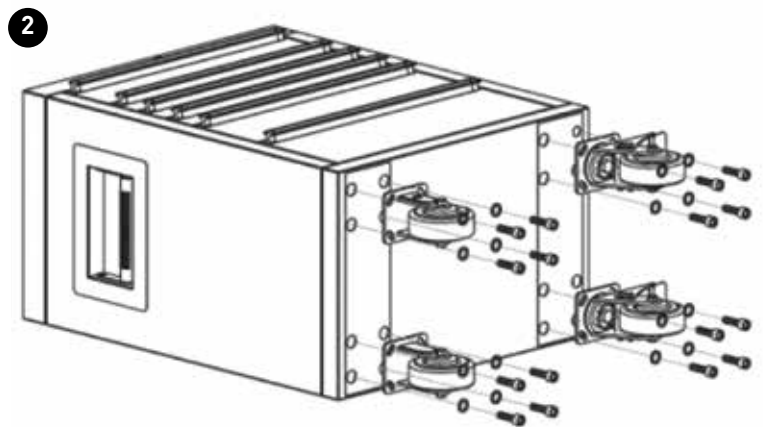
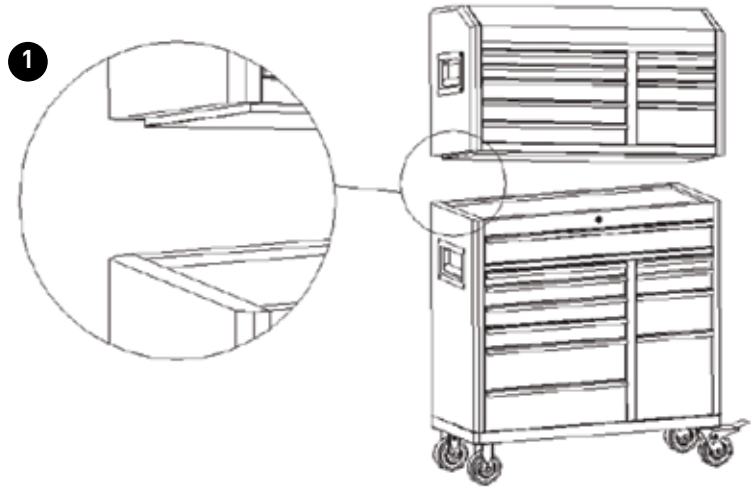
CAUTION

For your safety, **DO NOT** install castors by yourself. Installing the Castors requires **TWO PEOPLE** due to having to lay the tool trolley on its back and to stand it up once the castors are installed. Failure to follow this warning may result in personal injury and damage to the tool trolley.

COVER ASSEMBLY TO ASSEMBLE COVERS

When using both covers for the Top Chest and Bottom Roller Cabinet, zip the two covers together to create one cover. Otherwise the covers can be used individually.

- 3 To unzip the cover top of bottom cover
- 4 To zip the top cover and bottom cover up
- 5 To place cover over the rolling chest.





TOOL TROLLEY

11 DRAWER

K7308

Replacement Parts



REPLACEMENT PARTS

ITEM	PART NO.	DESCRIPTION	QUANTITY
1	K7303-3	Mat Liners	12
2	K7303-1	Lock Set (Cam Lock with Round Keys)	1
3	K7303-4	Castors (Two Rigid & Two Swivel)	4
4	K7303-33	Bolts & Washers for Castors 930mm	16

ITEM	PART NO.	DESCRIPTION	QUANTITY
5	K7303-6	Side Handles	2
6	K7300-1	Drawer Slides	11
7	NOT SHOWN	Hex Key for Castors	1



National Head Office
 National Distribution and Showroom
 3 Lakeview Dve, Caribbean Business Park
 Scoresby Victoria 3179 Australia
 ABN 41 007 185 006

Administration
 T +61 3 9730 7100 F +61 3 9730 7199
 E enquiries@kinchrome.com.au
 W kinchrome.com.au

Customer Service Centre
 T 1300 657 528 F 1300 556 005

Made to Kinchrome Tools & Equipment Pty Ltd Global specifications and quality standards in China
 Kinchrome UK Ltd PO Box 646 EASTLEIGH S050 0NA

Australia & Global	UK & EU
www.kinchrome.com.au	www.kinchrome.co.uk
enquiries@kinchrome.com.au	enquiries@kinchrome.co.uk