

OPERATION MANUAL

CAUTION: TAKE SAFETY PRECAUTIONS WHEN USING YOUR TOOLBOX



Do not open more than one drawer at a time.



Do not step on drawers.



Do not let children near the Toolbox.



Do not separate Chest from Trolley.



Do not exceed Drawer Load Limit.



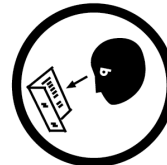
Not suitable for mounting in Vehicles.



Set the brake on the locking castors unless you are moving the Toolbox.



Lock drawers and lid before moving the Toolbox.



IMPORTANT:

THIS OPERATING MANUAL CONTAINS IMPORTANT SAFETY INFORMATION. READ CAREFULLY AND UNDERSTAND ALL INFORMATION BEFORE OPERATING TOOL TROLLEY. SAVE THIS MANUAL FOR FUTURE USE.

PARTS LIST

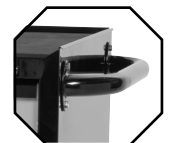


TOOL TROLLEY SPECIFICATIONS

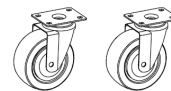
	Width	Depth	Height
Overall	758mm	461mm	957mm
Overall (w/out Castors)	758mm	461mm	812mm
Small Drawers	583mm	400mm	57mm
Deep Drawers	583mm	400mm	132mm
Castor Size	114x38mm (4.5" x 1.5") 2 x Locking		
Weight	42.6kg		



7 x EVA Liners



Trolley Handle



Non-Locking Castors x 2



Locking Castors x 2



Keys x 2



16 x 12mm Bolts for Castors

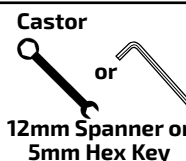


4 x 10mm Bolts for Handle

TOOLS & ASSISTANCE NEEDED

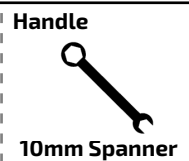


2 People Lift



Castor

12mm Spanner or 5mm Hex Key



Handle

10mm Spanner

ASSEMBLY INSTRUCTIONS

1 Handle Installing

- Position the trolley side handle behind the holes on the trolley.
- Attach with (4) bolts and tighten with an adjustable wrench.

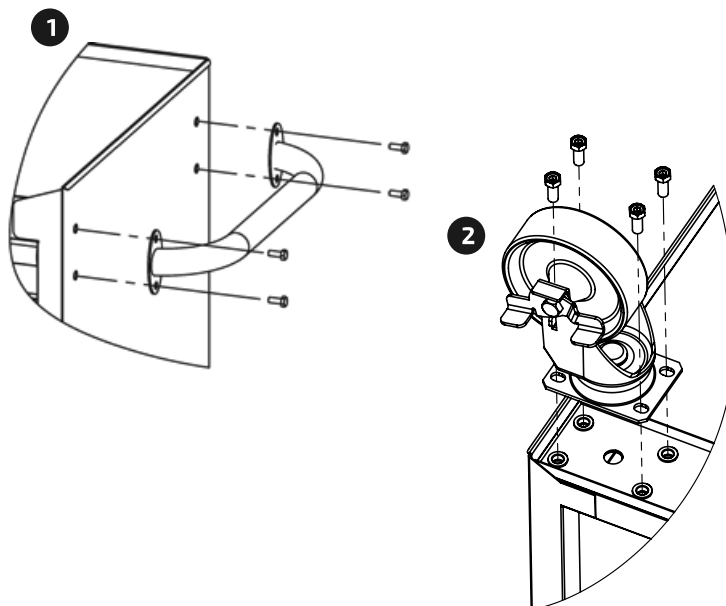
Note: The side handle can be mounted to either side of the trolley.

2 Castor Installing (If applicable)

- Be sure the drawers are locked and lay the trolley on its side.
- Secure castors to the unit using the 12mm bolts provided.
- Tighten with a 12mm spanner or 5mm hex key.
- Repeat this process for the castors on the opposite of the trolley.
- Return the trolley to its upright position.

Caution: Do not over tighten the bolts.

Caution: Both locking castors must be fitted to front of trolley.



MAINTENANCE

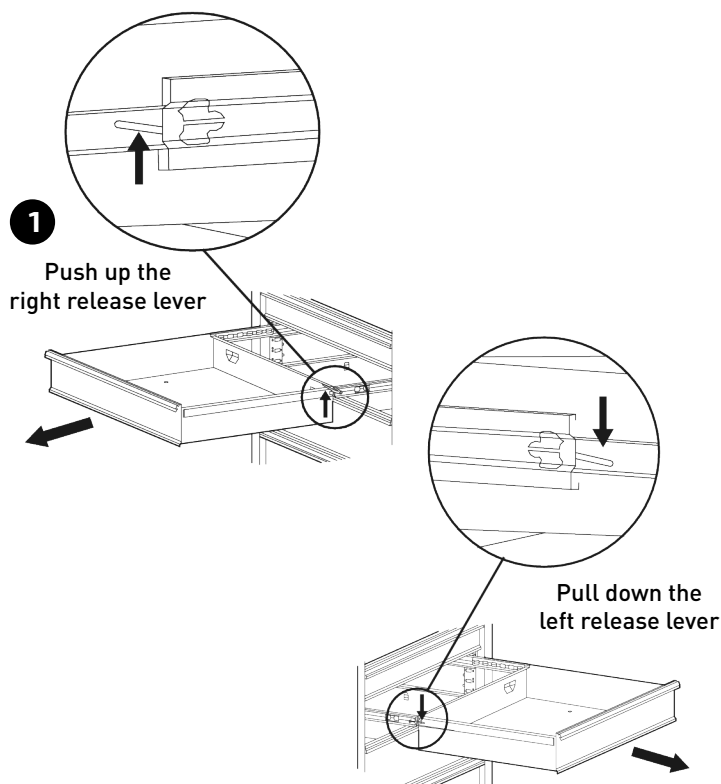
1 Removing the Drawers

- Fully extend the empty drawer.
- Push up the right grey release lever while pushing down the left grey release lever.
- Pull the drawer outward until it is released from the drawer slide.

2 Re-Inserting The Drawers

- Extend the drawer slides.
- Insert the brackets on each side of the drawer into the slots on the slides, being careful that they are properly positioned.
- Once properly inserted, completely close the drawer to set the slides in their proper positions.

- 3 • Periodically tighten all hardware
- Periodically lubricate castors
- Lubricate the slides twice a year
- Lubricate the lock with graphite annually
- Use a damp Microfibre cloth to clean all surfaces



REPLACEMENT PARTS



ITEM	PART NO.	DESCRIPTION	QUANTITY
1	STP7779	Key Only (Specify Key Number) X 1	1
2	STP7778	Lock & Key	1
3	STP7736-3	Trolley Handle	1
4	STP7726-3	Ball Bearing Slide (Pair)	6
5	STP7736-8	Castor Swivel x 1	2
6	STP7736-9	Castor Swivel x 1 (Locking)	2
7	STP7736-10	Castor Bolt Pack	1
8	STP7726-4	EVA Mat Pack 7 Piece	1