

# KINCROME

# EVOLUTION

# Tool Trolley

7 Drawer Deep  
675mm (26")

K7927

## Operation Manual



### IMPORTANT:

This operating manual contains important safety information, read carefully & understand all information before operating the trolley. Save this manual for future use.



Do not open more than one drawer at a time.



Do not step on drawers.



Do not let children near the Toolbox.



Do not separate Chest from Trolley.



Do not exceed Drawer Load Limit



Not suitable for mounting in Vehicles



Lock drawers and lid before moving the Toolbox.



## Parts List



### Measurements:

Weight: 51.3kg

(External - With Castors - 125 x 50mm (5 x 2") x2 Locking)

WIDTH	675 mm	DEPTH	466 mm	HEIGHT	963 mm
-------	--------	-------	--------	--------	--------

### Measurements - Top Section

WIDTH	665 mm	DEPTH	466 mm	HEIGHT	15 mm
-------	--------	-------	--------	--------	-------

### Shallow Drawers

WIDTH	566 mm	DEPTH	405 mm	HEIGHT	62 mm
-------	--------	-------	--------	--------	-------

### Deep Drawers

WIDTH	566 mm	DEPTH	405 mm	HEIGHT	143 mm
-------	--------	-------	--------	--------	--------

## Included



Keys x 2



Trolley Handle x 1



4 x Hex 5mm  
Bolts for  
Trolley Handle



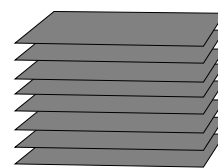
13mm x 16 Bolts  
(16) for Castors  
(with Washers)



Non-Locking  
Castors (2)



Locking  
Castors (2)



8 x Liners

Tools & Assistance  
Required for Trolley:



2 People



For Castors:  
13mm Spanner



For Handle:  
5mm Hex Key

# Tool Trolley

7 Drawer Deep  
675mm (26")

K7927

## Assembly Instructions

### 1 Handle Installing

- Position the trolley side handle behind the holes on the trolley.
- Attach with (4) bolts, and tighten with a 5mm Hex Key.

1



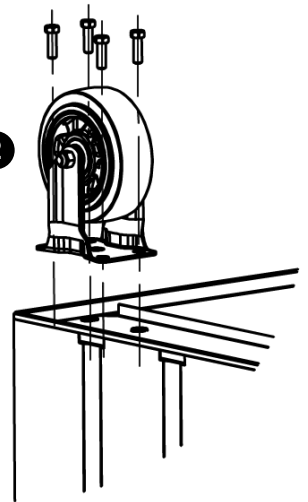
### 2 Castor Installing (If applicable)

- Be sure the drawers are locked and lay the trolley on its side.
- Secure castors to the unit using the 13mm bolts provided.
- Tighten with a 13mm Spanner.
- Repeat this process for the castors on the opposite of the trolley.
- Return the trolley to its upright position.

**Caution:** Do not over tighten the bolts.

**Caution:** Both locking castors must be fitted to front of trolley.

2



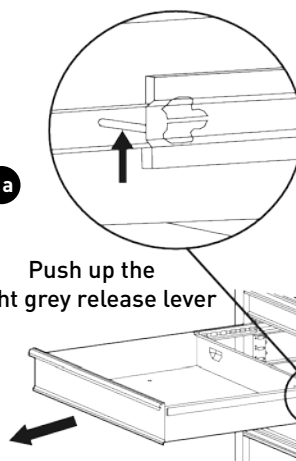
## Maintenance

### 1 Removing the Drawers

- Fully extend the empty drawer.
- Push up the right grey release lever while pushing down the left grey release lever.
- Pull the drawer outward until it is released from the drawer slide.

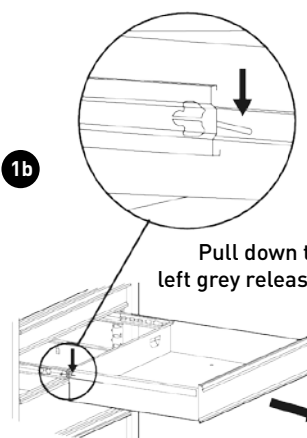
1a

Push up the right grey release lever



1b

Pull down the left grey release lever



### 2 Re-Inserting The Drawers

- Extend the drawer slides.
- Insert the brackets on each side of the drawer into the slots on the slides, being careful that they are properly positioned.
- Once properly inserted, completely close the drawer to set the slides in their proper positions.

- Periodically tighten all hardware
- Periodically lubricate castors
- Lubricate the slides twice a year
- Lubricate the lock with graphite annually
- Use a damp Microfibre cloth to clean all surfaces

**KINCROME****EVOLUTION**

# Tool Trolley

7 Drawer Deep  
675mm (26")

K7927

## Parts List



## Spare Parts

ITEM	PART NO.	DESCRIPTION	QUANTITY
1	K7999-10	Lock & Key	1
2	K7999-11	Key Only (Specify Number)	1
3	K7999-12	Trolley Handle	1
4	K7999-8	Ball Bearing Slide (Pair)	7

ITEM	PART NO.	DESCRIPTION	QUANTITY
5	K7999-26	Eva Mat Pack 8 Pce	1
6	K7999-13	Castor Swivel x 1	2
7	K7999-14	Castor Swivel x 1 (Brake)	2
8	K7999-15	Castor Bolt Pack	1

**National Head Office**  
National Distribution and Showroom  
3 Lakeview Dve, Caribbean Business Park  
Scoresby Victoria 3179 Australia  
ABN 41 007 185 006

Administration  
T (03) 9730 7100 F (03) 9730 7199  
E [enquiries@kincrome.com.au](mailto:enquiries@kincrome.com.au)  
W [kincrome.com.au](http://kincrome.com.au)

Customer Service Centre  
T 1300 657 528 F 1300 556 005

Made to Kincrome Tools & Equipment Pty Ltd Global specifications and quality standards in China  
Kincrome UK Ltd PO Box 468 Southampton SO30 9EP

Australia & Global	UK & EU
<a href="http://www.kincrome.com.au">www.kincrome.com.au</a>	<a href="http://www.kincrome.co.uk">www.kincrome.co.uk</a>
<a href="mailto:enquiries@kincrome.com.au">enquiries@kincrome.com.au</a>	<a href="mailto:enquiries@kincrome.co.uk">enquiries@kincrome.co.uk</a>