

KINCROME EVOLUTION

Tool Chest 7 Drawer Deep 660mm (26") K7917

Operation Manual

! IMPORTANT: This operating manual contains important safety information, read carefully & understand all information before operating the chest. Save this manual for future use.

- Do not open more than one drawer at a time.
- Do not step on drawers.
- Do not let children near the Toolbox.
- Do not separate Chest from Trolley.
- Do not exceed Drawer Load Limit.
- Not suitable for mounting in Vehicles.
- Lock drawers and lid before moving the Toolbox.



Parts List



Measurements:

Weight: 37kg

| | | | | | |
|-------|--------|-------|--------|--------|--------|
| WIDTH | 660 mm | DEPTH | 455 mm | HEIGHT | 488 mm |
|-------|--------|-------|--------|--------|--------|

Measurements - Top Section

| | | | | | |
|-------|--------|-------|--------|--------|-------|
| WIDTH | 620 mm | DEPTH | 450 mm | HEIGHT | 50 mm |
|-------|--------|-------|--------|--------|-------|

Small Shallow Drawers

| | | | | | |
|-------|--------|-------|--------|--------|-------|
| WIDTH | 166 mm | DEPTH | 405 mm | HEIGHT | 45 mm |
|-------|--------|-------|--------|--------|-------|

Shallow Drawers

| | | | | | |
|-------|--------|-------|--------|--------|-------|
| WIDTH | 566 mm | DEPTH | 405 mm | HEIGHT | 45 mm |
|-------|--------|-------|--------|--------|-------|

Deep Drawers

| | | | | | |
|-------|--------|-------|--------|--------|--------|
| WIDTH | 566 mm | DEPTH | 405 mm | HEIGHT | 104 mm |
|-------|--------|-------|--------|--------|--------|

Maintenance

- Periodically tighten all hardware
- Lubricate the slides twice a year
- Lubricate the lock with graphite annually
- Use a damp Microfibre cloth to clean all surfaces

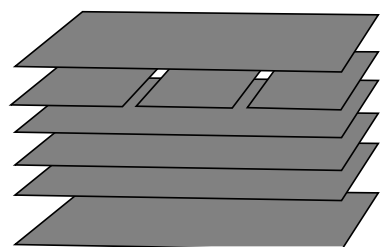
Tools & Assistance
Required for Trolley:

2 People

Included



Keys x 2



8 x Liners

KINCROME EVOLUTION

Tool Chest 7 Drawer Deep 660mm (26")

K7917

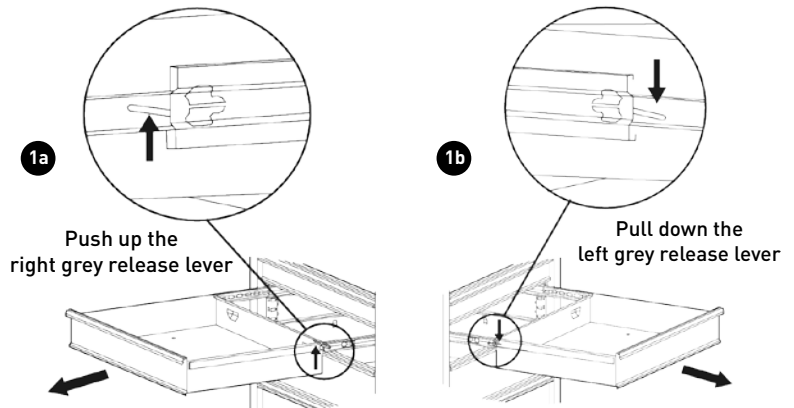
Maintenance

1 Removing the Drawers

- Fully extend the empty drawer.
- Push up the right grey release lever while pushing down the left grey release lever.
- Pull the drawer outward until it is released from the drawer slide.

2 Re-Inserting The Drawers

- Extend the drawer slides.
- Insert the brackets on each side of the drawer into the slots on the slides, being careful that they are properly positioned.
- Once properly inserted, completely close the drawer to set the slides in their proper positions.



Parts List



Spare Parts

| ITEM | PART NO. | DESCRIPTION | QUANTITY |
|------|----------|-------------------------------|----------|
| 1 | K7999-1 | Lock & Key | 1 |
| 2 | K7999-2 | Key Only (Specify Key Number) | 1 |
| 3 | K7999-6 | Gas Struts (Pair) | 1 |

| ITEM | PART NO. | DESCRIPTION | QUANTITY |
|------|----------|---------------------------|----------|
| 4 | K7999-8 | Ball Bearing Slide (Pair) | 7 |
| 5 | K7999-9 | Side Carry Handle x 1 | 2 |
| 6 | K7999-21 | Eva Mat Pack 8 Pce | 1 |

National Head Office
National Distribution and Showroom
3 Lakeview Dve, Caribbean Business Park
Scoresby Victoria 3179 Australia
ABN 41 007 185 006

Administration
T (03) 9730 7100 F (03) 9730 7199
E enquiries@kincrome.com.au
W kincrome.com.au

Customer Service Centre
T 1300 657 528 F 1300 556 005

Made to Kincrome Tools & Equipment Pty Ltd Global specifications and quality standards in China
Kincrome UK Ltd PO Box 468 Southampton SO30 9EP

| Australia & Global | UK & EU |
|--|--|
| www.kincrome.com.au | www.kincrome.co.uk |
| enquiries@kincrome.com.au | enquiries@kincrome.co.uk |